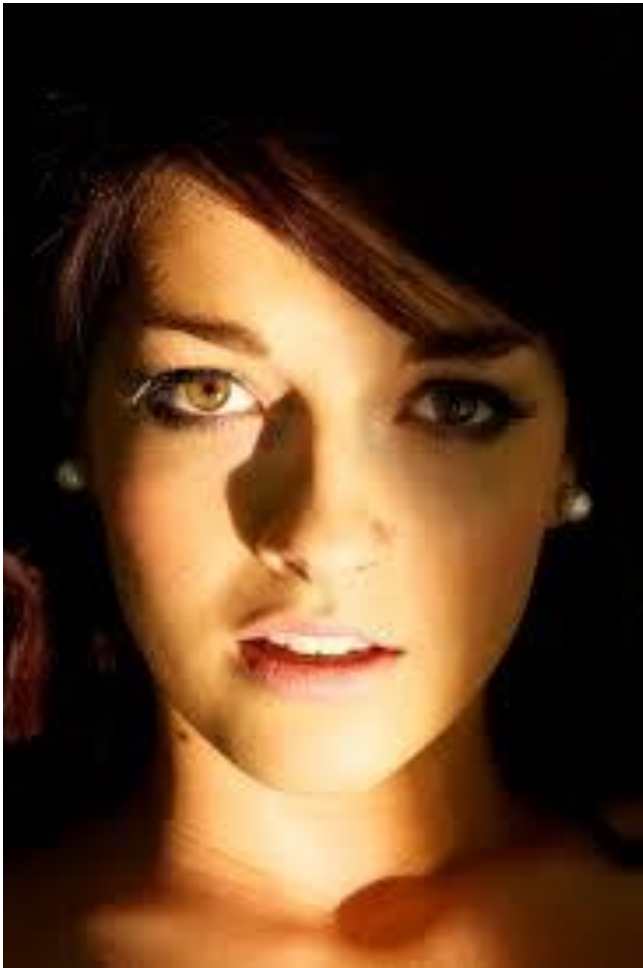


## PORTAITURE SHOT LIST (3)

- 1) Formal, centred, well lit, flat and even lighting, no chin shadow, head on, shoulder rotation. (eg: a passport photo or a student card photo) Should depict nothing more than what the person looks like.



- 2)  $\frac{1}{2}$  (give or take) of the face shadowed “coming out of the darkness”,  $\frac{3}{4}$  face pose, head tilt at best angle to emphasize dramatic light or adjust where subject is sitting to keep it head on. Tip: exposure compensation is likely needed due to harsh light!



- 3) rule of thirds applied for and off centre subject placement and location of eye plane.  
Top of head cropped, face zoomed into, 2/3 frame occupied by face, 1/3 frame background

